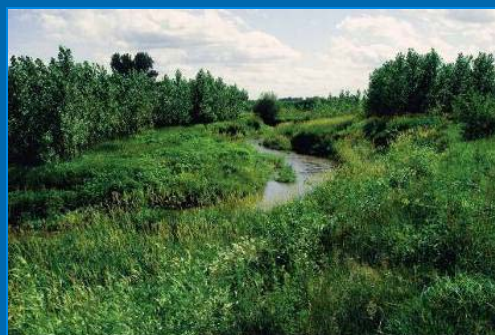


# Revisions to Chapter NR 151 and Implications Conservation Programs

Russ Rasmussen, DNR



Wisconsin Soil & Water Conservation Society  
Stevens Point  
February 8, 2011

# NR 151 Changes: Part of Larger Effort

- Phosphorus Water Quality Standards (NR 102 & 217)
- Changes to Urban Standards (NR 151)
- Changes to Grants Programs (NR 153 & 155)
- All other provisions remain in effect



# Changes to Nonpoint Rules

- Effective date: January 1, 2011
- Ag performance standards & prohibitions
  - New Standards
  - Modifications to Existing Standards



# New NR 151 Ag Standards

- Tillage Setback
- Process Wastewater
- Phosphorus Index

# Tillage Setback

- Protects bank integrity, reduces deposition
- Setback: 5 - 20 feet from surface water
- Requirements
  - No tillage
  - Adequately vegetated



# Process Wastewater Handling

- Prohibits significant discharge to state waters
- Main concern: milk house waste; feed leachate
- Factors to consider:
  - Evidence of discharge
  - Volume
  - Location & conveyance



# Phosphorus Index Standard

- Applies to crops, pasture, winter grazing areas
- Measures phosphorus delivery using the PI. Also prohibits direct mechanical application of nutrient and manure
- PI must be:
  - Calculated using Wis. Phosphorus Index unless otherwise approved by DNR
  - 6 or less averaged over accounting period
  - 12 or less in any one year within the accounting period


# Phosphorus Index Standard

## ➤ Accounting Period Requirements

- Begins with completion of complete NM plan
- May use planned & historic data
- Once NM plan completed, use historic data as it becomes available



# Other Changes to NR 151 Ag Standards

- Expands definition of “Direct Runoff”
  - Defines “feedlot” and “pasture”
  - Limits CREP exemption from compliance maintenance requirement
  - Adds a direct enforcement provision for repeated mismanagement
- 

# General Program Issues

- Applicability to DATCP Programs
  - ATCP 50 Programs
  - Working Lands (cross-compliance)
  - Livestock Siting (cross compliance)

# General Program Issues

- Applicability to Other DNR Programs
  - NR 243 CAFOs
  - NR 243 Other Livestock Operations
  - TMDLs

# Performance Standard Specific Issues: Tillage Setback, Process Wastewater

## ➤ Tillage Setback

- Do not see major issues at this time
- Some may arise when ATCP 50 updated

## ➤ Process Wastewater

- Will develop an interim BMP for NR 153 with assistance from DATCP based on NRCS 629, other information

# Performance Standard

## Specific Issues: PI

### ➤ Many Factors to Consider

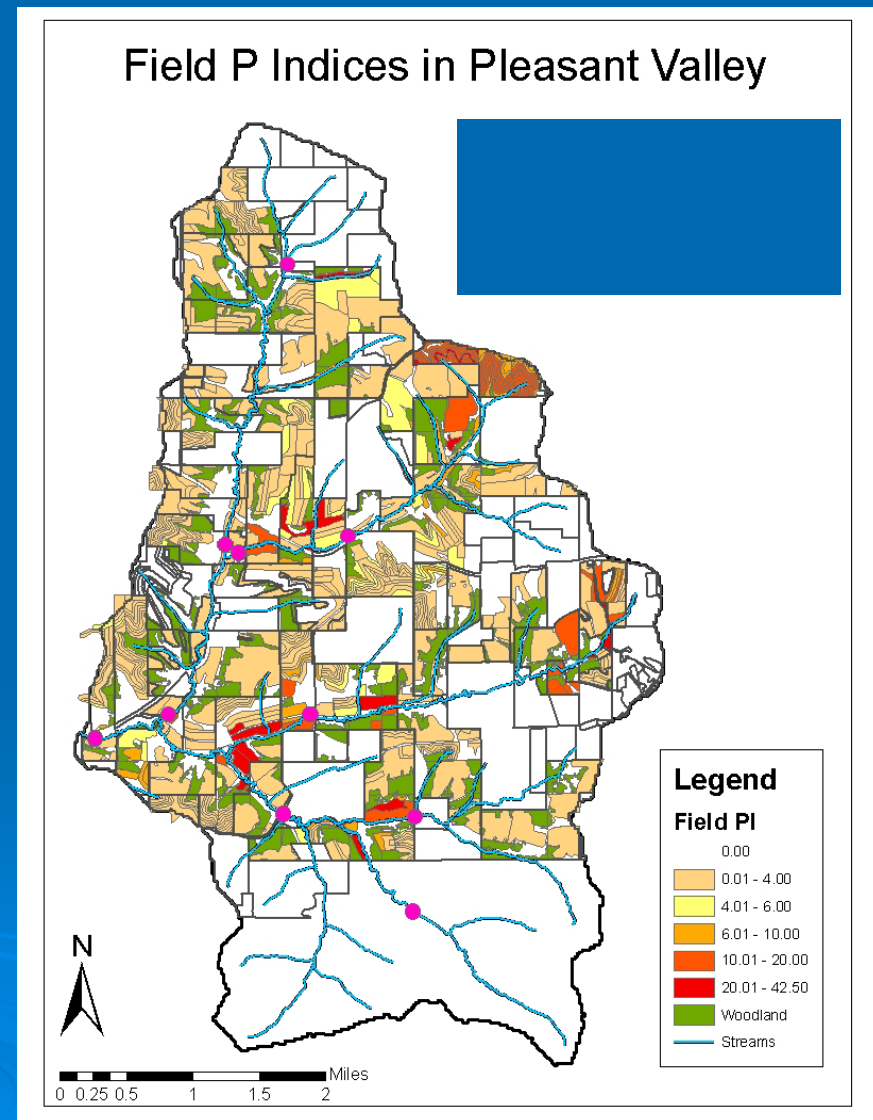
- Impact of field runoff on water quality
- Status of existing NM plan
- Extent of farm management changes needed to comply
- Effect of cross-compliance requirements
- Need for alternative to PI calculation
- Where do we start?
- What do we cost share?
- How is accounting period defined, and by who?

# Phosphorus Index Standard

## Average P- Index Values

Average: 4  
Minimum: 0.1  
Maximum: 45

16% of Fields PI > 6  
84% of Fields PI < 6



# Performance Standard Specific Issues: PI

- Focus on farms without 590-compliant plans
  - Require PI as part of new NM plans
  - Continue to use standard cost-share rates
  - Focus on farms where PI method applies

# Performance Standard Specific Issues: PI

- Extenuating Factors to Consider
  - Fields violating annual cap or causing wq impacts
  - TMDL implementation requirements



# Discussion

